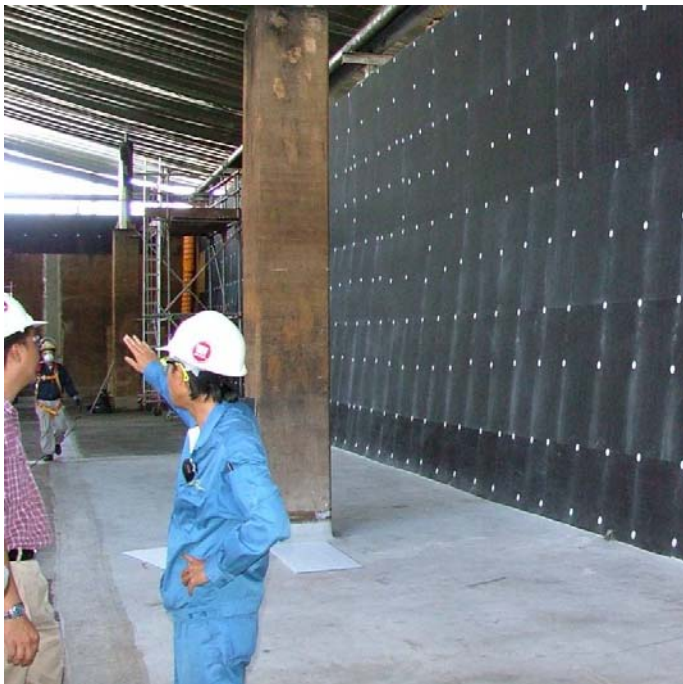


## Flowchem VE Honeycomb (10 mm)



### Description

An insulating, extruded polypropylene honeycombed board with conductive polyester non-woven fabric faces, to be used only in conjunction with the Flowchem VE GL vinyl ester resin lining. High performance (HP) grade available for heavy traffic conditions.

### Uses

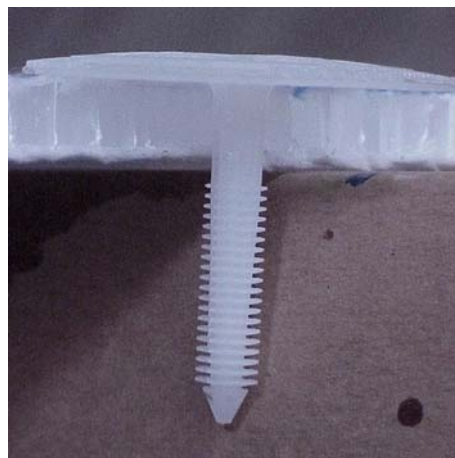
For isolation from concrete and masonry structures prior to the application of a glass fibre reinforced lining system, which will provide resistance to continuous or occasional exposure from heavy duty chemical, thermal and mechanical attack.

### Benefits

- Insulation and isolation from existing structure
- Low electrically resistant surface – spark testing
- Provides sound platform for the Flowchem VE GL
- No surface preparation or repair required
- Bridges cracks and movement joints
- Tolerant of damp or wet conditions
- Leak detection and drainage benefits
- Suitable for new construction and renovation



### System Design - Fixing



## Model Specification

Product: Flowchem VE Honeycomb C Board (or C-HP Board)  
Finish: Conductive  
Thickness: 10 mm  
Colour: Black  
Preparatory work and application in accordance with suppliers instructions.  
Supplier: Flowcrete UK Ltd  
Telephone : Customer Service - +44 (0) 1270 753000

## Products Included in this System

Board: Honeycomb C: 2.5 m x 1.2 m x 10 mm board  
**Or** Honeycomb C-HP: 2.5 m x 1.2 m x 10 mm board

Finish: Flowchem VE GL @ 3 - 4 kg/m<sup>2</sup> (~3 mm thickness)  
- depending on weight of the glass reinforcement used

**NB:** Specifications are written for each installation to meet the clients particular requirements.

## Installation Service

The installation should be carried out by a Flowcrete approved contractor with a documented quality assurance scheme.  
Obtain details of our approved contractors by contacting our customer service team or enquiring via our web site [www.flowcrete.co.uk](http://www.flowcrete.co.uk)

## Environmental considerations

The finished system is assessed as non-hazardous to health and the environment. The long service life and seamless surface reduce the need for repairs, maintenance and cleaning. Environmental and health considerations are controlled during manufacture and application of the products by Flowcrete staff and fully trained and experienced contractors.

## Focus on the Floorzone

Flowcrete are market leaders in specialist industrial and commercial flooring. Systems available include: underfloor heating systems, floor screeds, surface damp proof membranes, decorative floor finishes, seamless terrazzo, car park deck waterproofing, corrosion resistant systems... to name just a few.  
Our objective is to satisfy your Floorzone needs.

## Technical Information

The figures that follow are typical properties achieved in laboratory tests at 20 °C and at 50% Relative Humidity.

### Properties for the Flowchem VE Honeycomb C Board

Compressive strength	1.3 MPa (ISO 844)
E Modulus	15 MPa (ISO 844)
Tensile strength (perpendicular)	0.5 MPa (NFT 56130)
Shear strength	0.5 MPa (ISO 1922)
Shear modulus	8 MPa
Density	80 kg/m <sup>2</sup>
Temperature resistance	Softening point 125 °C
Electrical conductance	3.5 Kilohms / cm <sup>2</sup>

### Properties for the Flowchem VE GL

Temperature Resistance	Tolerant up to 145°C
Chemical Resistance	Contact Technical Department
Barcol hardness	> 50 (ASTM 2583)
E-Modulus	3.1 GPa (ASTM D-695)
Volume Shrinkage	< 0.004 % Rill 4 2.5.3.2.1
Compressive Strength	160 MPa (ASTM D-695)
Flexural Strength	125 MPa (ASTM D-790)
Tensile Strength	73 MPa (ASTM D-638)
Adhesion	> 4 MPa (Note: substrate failure)
Density	1.01

## Life Expectancy

5 - 10 years dependant on the service conditions and the maintenance regime.

## Important Notes

Flowcrete's products are guaranteed against defective materials and manufacture and are sold subject to its standard Terms and Conditions of Sale, copies of which can be obtained on request.

Any suggested practices or installation specifications for the composite floor or wall system (as opposed to individual product performance specifications) included in this communication (or any other) from Flowcrete UK Ltd constitute potential options only and do not constitute nor replace professional advice in such regard. Flowcrete UK Ltd recommends any customer seek independent advice from a qualified consultant prior to reaching any decision on design, installation or otherwise.